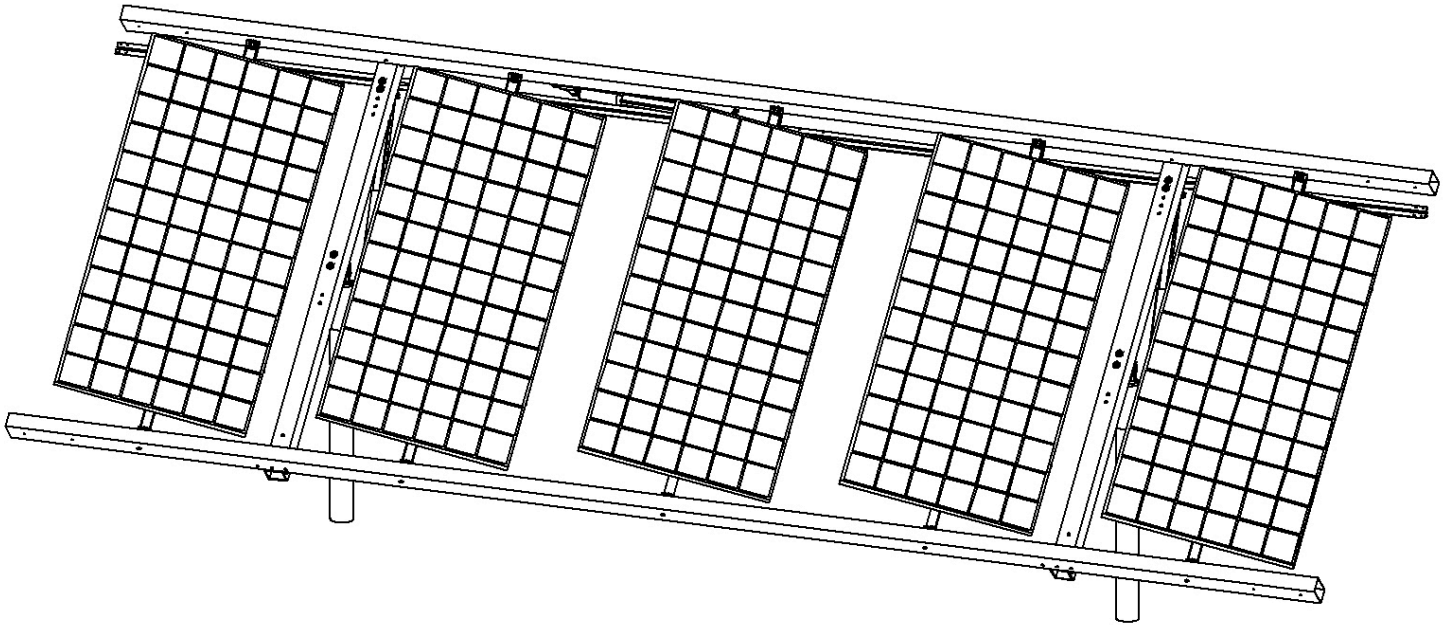


InteliTrack™ IT1800A Latitude Adjust Single-Axis Tracker



Latitude Adjust Single-Axis Tracking

By adjusting the IT1800A 2 to 4 times per year you can generate nearly as much power as a dual-axis tracker at a lower cost by eliminating drive mechanisms. The IT1800A. Based on Sedona Energy Labs' patent-pending *Balanced/Frame* technology, the 1800A is a cost-effective power generator in situations where periodic adjustment is possible such as small to medium solar farms and areas where labor costs are low.

The IT1800 produces up to 40% more power than fixed racking¹ and up to 20% more than horizontal trackers, depending on location.

Its low-to-the-ground design makes the IT1800A quick and easy to assemble without needing a crane or heavy-duty earth-moving equipment.

¹ National Renewable Energy Laboratory

InteliTrack™ IT1800 Latitude Tilt Single-Axis Tracker

Panels	5 PV panels up to 77" x 39"; 195.6cm x 99.1cm
Ganging	Up to 5 units
Rotation	Radial: -45° to +45°
Backtracking	Yes
Controller	Algorithmic: SEL MAXXTRAK or Mitsubishi Solar Tracking Controller FX
Operating Voltage	24VDC
Drive System	Linak electric linear actuator
Structure	Extruded aluminum tubing
Bearings	Igus® polymer
Max Installed Dimensions	8.0'H (with minimum ground clearance) x 23' L x 7.8'D; 2.44m x 7.01m x 2.36m
Wind Protection	Optional – 2 parking modes at designated wind speed
Wind Rating	90 mph; 144 kph
Operating Temperature	-13° to 133° F; -25° to 55° C
Weight	340bs/154.2g with actuator & screw jack; 315lbs/142.9kg without actuator & screw jack
Ground Coverage Ratio	30% to 40% depending on latitude
Warranty	10 years on frame, manufacturers' on other components
Manufactured	USA

